



Chin Hsin Environ Engineering

Q1 2025 Investor Conference



CHIN HSIN

Safe Harbor Notice

- This document and relevant information herein may contain internal and external forward-looking information and constitute forward-looking statement.
- This document and relevant information may contain certain forward-looking statements. Such forward-looking statement is not actual results but only reflects the Company's estimates and expectations and is subject to inherent risks and uncertainties that could cause actual results to differ materially from such statement.
- Financial numbers in this document contains unaudited and unreviewed information. All information is for reference only.
- Any business outlook or forward-looking statement hereof reflects the Company's estimates and expectations as of now and is subject to change after this date. Unless required by applicable law, the Company undertakes no obligation to update any such information.

CHIN HSIN

Contents

1. Company Overview
2. Services and Products
3. Q1'25 Financial Results
4. Business Outlook
5. Recap of Recent Major Events

CHIN HSIN



1

Company Overview

CHIN HSIN

About Chin Hsin

A professional **medical waste and industrial waste clearance organization**,
Established **in 1999** combining **reuse of medical waste plastic** with an **environmentally friendly plastic-wood production** company focused on circular economy.

Paid-in capital
460 million NTD

Revenue
699 million NTD in 2024

Group employees
233

Services & Products

- Medical waste clearance
- Industrial waste clearance
- Medical waste reuse
- Chin-hsin timber
- Wastewater treatment

Business Philosophy

Our core business philosophy is centered around service, innovation, and sustainability. By IT management of waste clearance processes, we transform traditional industries into modern and innovative sectors. Through cross-industry integration, we are committed to converting waste plastics into reusable resources. We promote green thinking in our operational planning and continue to apply our expertise in the three key areas of environmental protection, distribution channels, and circular economy.



CHIN HSIN



2

Services and Products

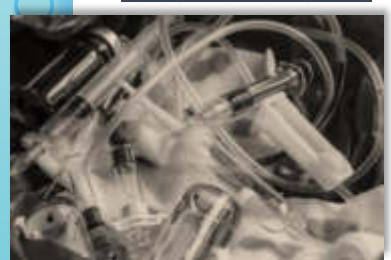
CHIN HSIN

Services & Products Overview



Cross-industry market development integration to increase the conversion of waste into reusable resources, reduce operating costs, and uncover business opportunities in the plastic circular economy.

**Medical
waste clearance**



**Industrial
waste clearance**



**Medical
waste reuse**



Chin-hsin timber



**Wastewater
treatment**

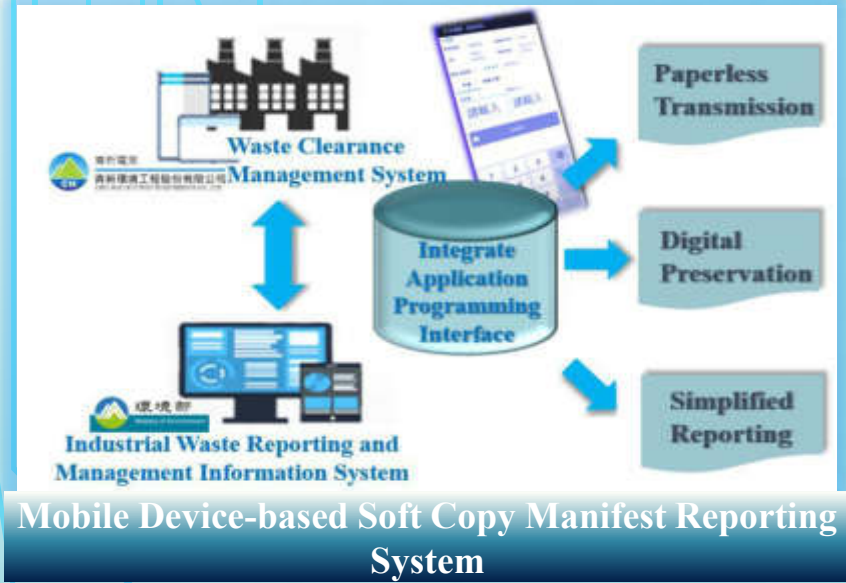


**Consulting
Services**



CHIN HSIN

Medical Waste and Industrial Waste Clearance



Scan the delivery slip for real-time GPS tracking



Industrial waste



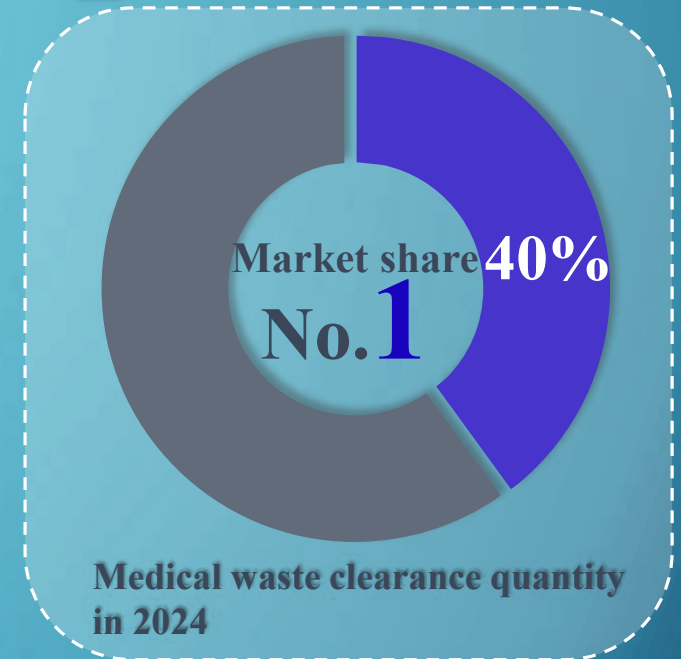
Develop more collaborative resource recovery disposal organizations.

Develop waste liquid clearance business for technology industry clients.

Strive for the clearance business of asbestos tiles from local government.



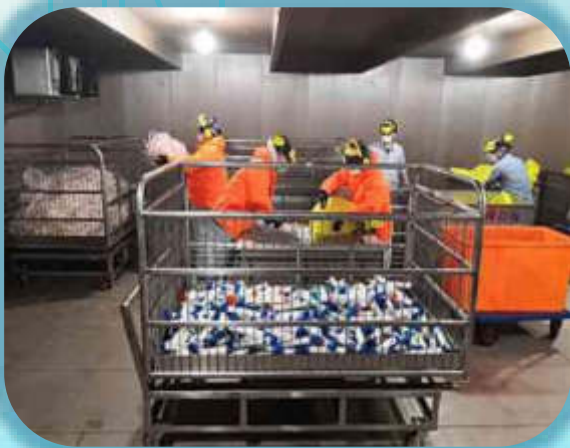
Medical waste



Strive for bids from public medical institutions.

Develop waste clearance business for biotechnology industry clients.

CHIN HSIN



Initial Manual Sorting



Sterilizing with High Temperature and High Pressure



Cleaning, Sorting, Cutting, and Extruding

Market share of Medical waste **clearance**

29%

2024 Reuse potential clients (our clearance clients)

Market share of Medical waste **reuse**

7.7%

2024 Reuse acquired clients

Waste Resource Recovery Rate

50%

Q1'2025 The conversion of waste into reusable resources

Applying for approval to add items for reuse.

Increase the shift for processing personnel.

Medical institutions strengthen waste reuse policies.

CHIN HSIN

Environmentally Friendly Building Materials- Chin-Hsin Timber

Obtain certifications and inspection approvals



Green Building Material Label



ISO9001:2015 Manufacturing of
Environmentally Friendly Building Materials



CNS15730 Wood-Plastic Recycled Composite



CNS7774 Rigid Foam Urethane for Heat Insulating

Policies for the use of recycled materials in public construction

Continuously strive to become a supplier of building
materials for government public construction.



CHIN HSIN



3

Q1'25 Financial Results

CHIN HSIN

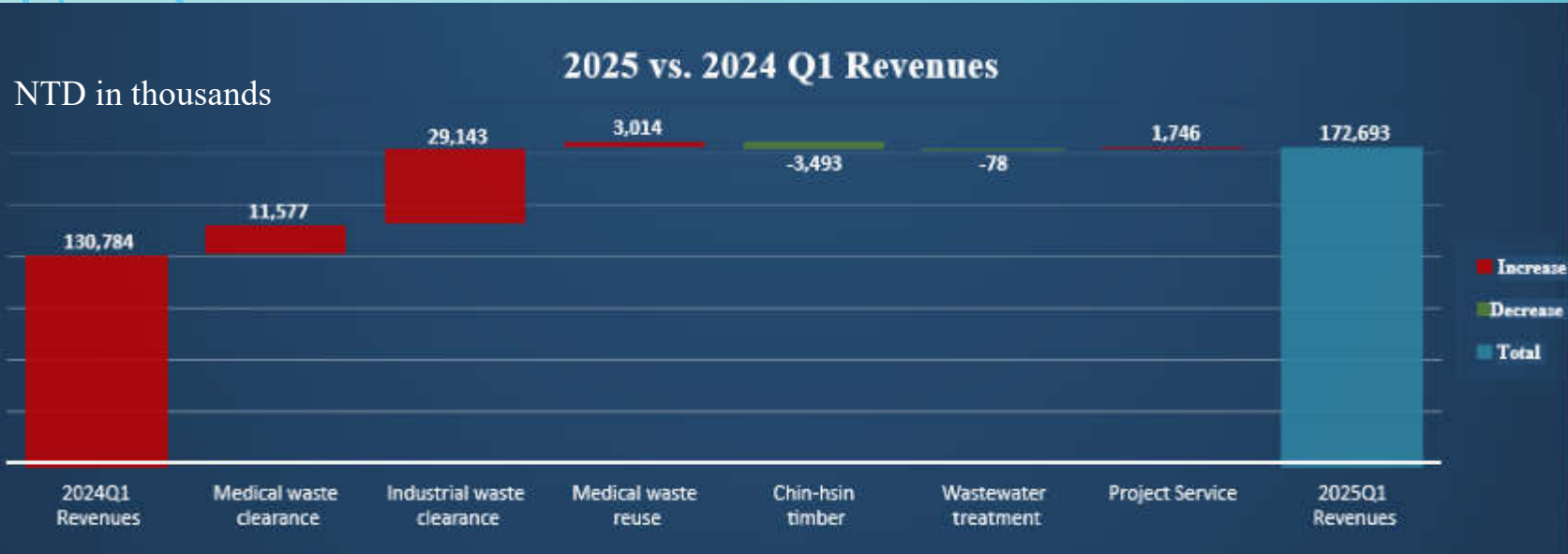
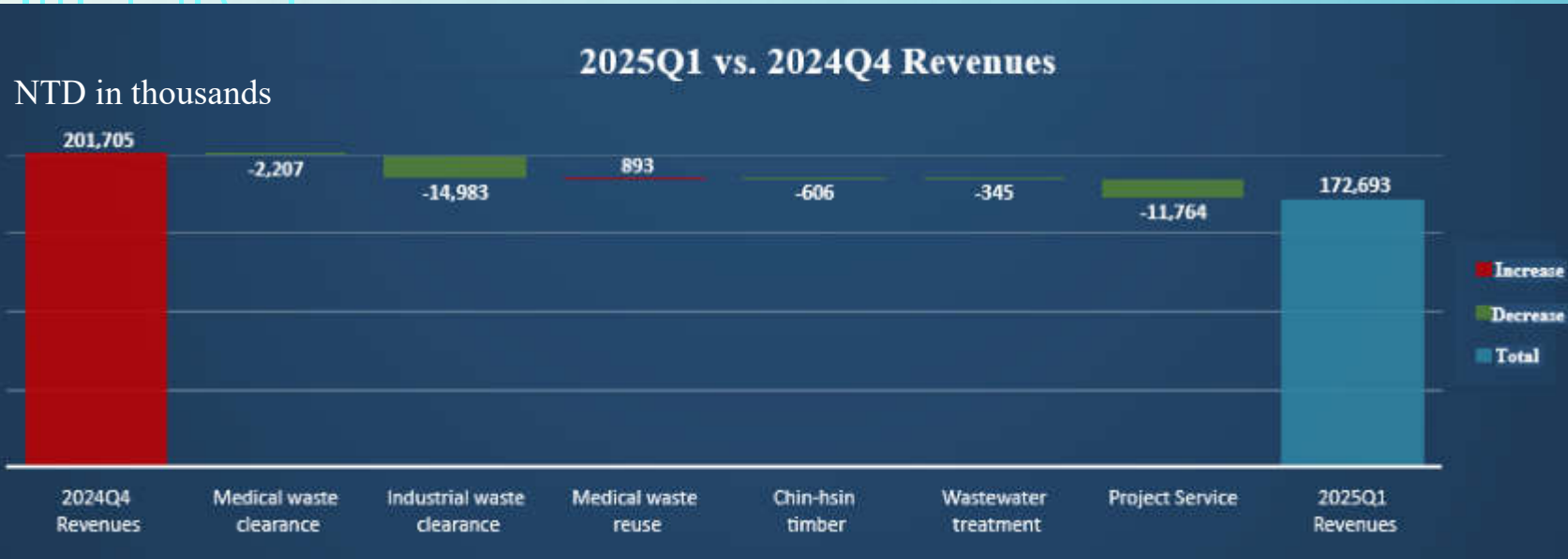
2025 Q1 Financial Results Summary

Statements of Income

(NTD in thousands)	Q1/25	Q4/24	QoQ	Q1/24	YoY
Revenues	172,693	201,705	-14%	130,784	32%
Gross Profit	100,305	122,871	-18%	67,018	50%
Operating Income	63,610	79,157	-20%	36,700	73%
Total Non-Op. Income and Expenses	968	3,256	-70%	206	370%
Income Before Tax	64,578	82,413	-22%	36,906	75%
Income Tax Expense	(13,010)	(16,795)	-23%	(7,786)	67%
Profit (Loss) Attributable to Owner of the Parent	51,568	65,699	-22%	29,314	76%
Earnings Per Share (NTD)	1.12	1.46	-23%	0.73	53%
Gross Profit Margin	58.08%	60.92%	-283bps	51.24%	684bps
Operating Profit Margin	36.83%	39.24%	-241bps	28.06%	877bps
Net Profit Margin	29.86%	32.57%	-271bps	22.41%	745bps

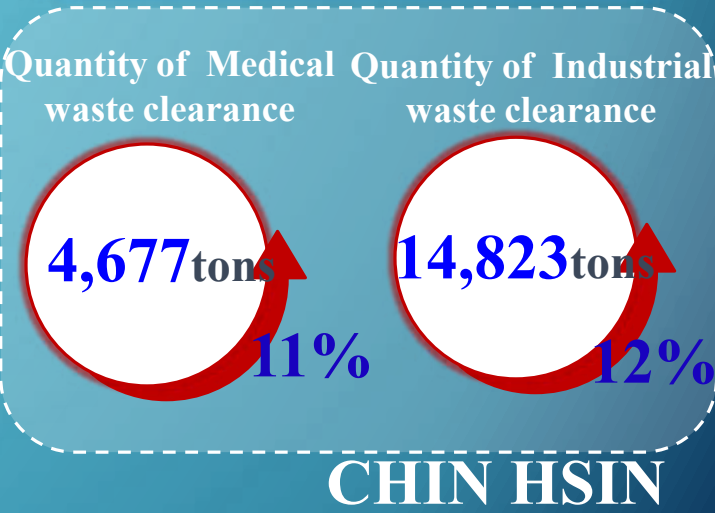
CHIN HSIN

2025 Q1 Performance Results



As of March 31, 2025

The client amount of Medical institutions is **10,805**.
The client amount of Medical institutions is **296**.
The client amount of Medical institutions for waste reuse is **89**.



2025 Q1 Cash Flow

Statements of Cash Flow

(NTD in thousands)	2025.1.1-2025.3.31	2024.1.1-2024.3.31
Net Cash Flows from (Used in) Operating Activities	79,017	55,835
Net Cash Flows from (Used in) Investing Activities	(239,766)	(35,300)
Net Cash Flows from (Used in) Financing Activities	(11,240)	(5,772)
Capital Expenditures	(216,214)	(8,090)
Free Cash Flow (FCF) ¹	(137,197)	47,745

1. Free Cash Flow = Net Cash Flows from (Used in) Operating Activities – Capital Expenditures

CHIN HSIN



4

Business Outlook

CHIN HSIN

15

Business Outlook

2025



Medical waste clearance



Industrial waste clearance



Medical waste reuse



Chin-hsin timber



Wastewater treatment



Consulting Services

YoY



CHIN HSIN



5

Recap of Recent Major Events

CHIN HSIN

Recap of Recent Major Events

Acquisition of Tainan Wenxian Road Factory

The Company has acquired land and buildings on Wenxian Road in Tainan from its parent company, Sunny Friend Environmental. The property is currently used by its subsidiary, Chengxin, as a factory and office. In the future, it will be developed into a Southern Region medical waste transfer station to enhance transportation efficiency. Chengxin submitted the application documents for the establishment of the transfer station to the Environmental Protection Bureau in March.

Jan.

Completion of Simplified Merger with Subsidiary - Huanxin Precision

To strengthen business management, the Company has merged with its subsidiary, Huanxin Precision, through an absorption-type merger. The operations and equipment of Chin-hsin timber have been integrated into the Company for unified management. The Company will continue to focus on the research, development, and market promotion of eco-friendly wood-plastic materials.

Expansion of Medical Waste Reusing Scope

In March, the Company completed trial operations for the full-range treatment of reusable medical waste. Upon official renewal of the permit, the scope of accepted and processed recyclable waste will be expanded.

Mar.

Jun.

Completion of First Draft of ESG Report

In the second half of 2024, the Company implemented a sustainability reporting information system for the first time. Up to now, it has completed the organization of the sustainable development promotion team, established an internal control system for sustainability information management, identified stakeholders and major topics, and finalized the first draft of the ESG report. The report is scheduled to be approved by the Board of Directors and released in August 2025.



CHIN HSIN

Thanks & Questions



CHIN HSIN

19